

City of Tombstone

P.O. Box 339 * 613 E. Allen Street
Tombstone, Arizona 85638

Phone (520) 457-2202 Fax (520) 457-3516

E-mail: cityhall@cityoftombstone.com

Addendum #1 for RFP #01-17 Senior Center Electrical Improvements

March 8, 2017

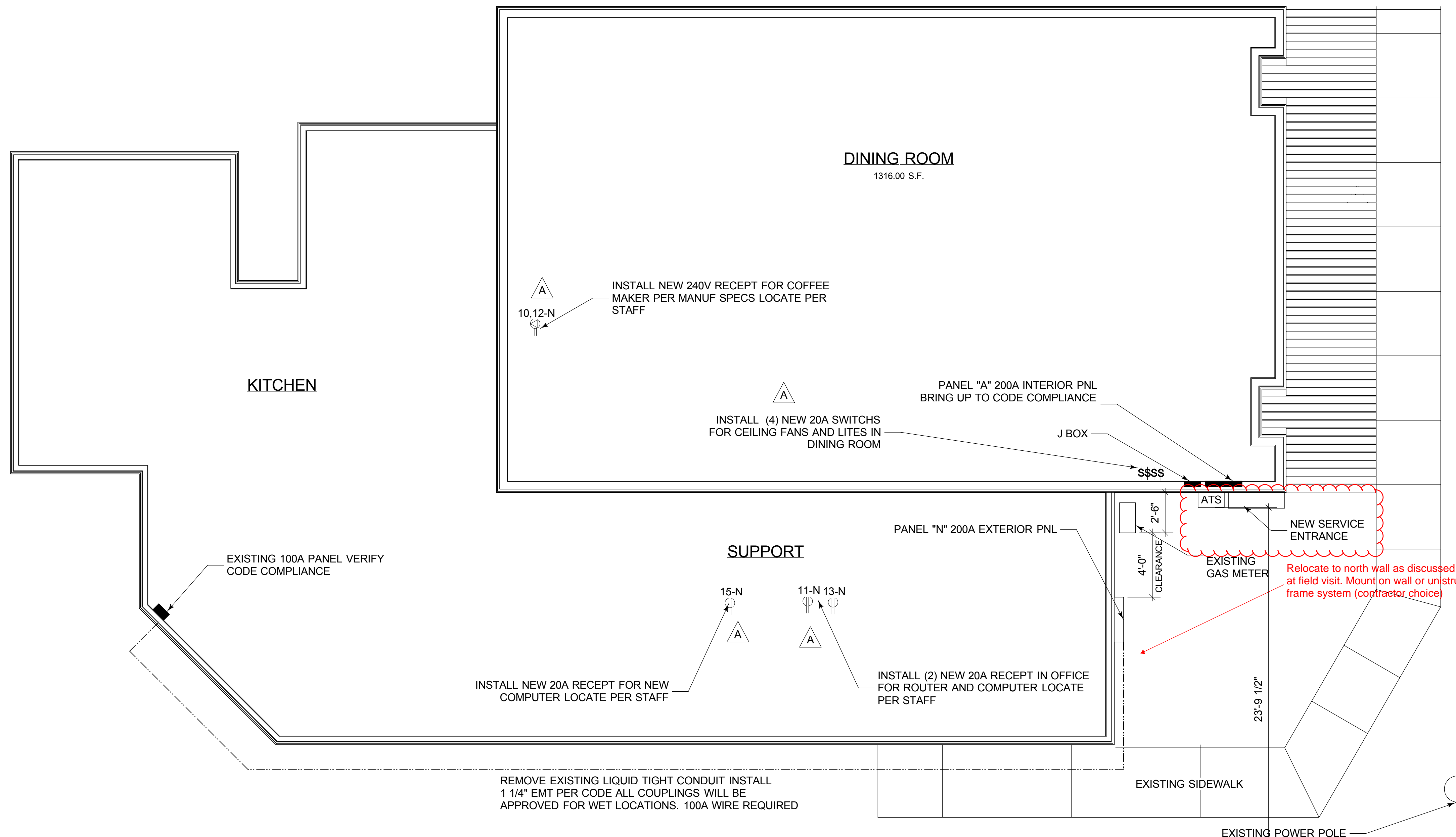
An onsite visit to walk the job and review the plans was conducted at 10:00 AM today.

Attendees included:

Michael (Mac) McMillan with Brown & Associates 602-319-9666
Jason Floyd with Madyson Corporation 480-251-7392
David Garrett with Garrett Electrical 520-221-0569
Bob Radcliff with Eco-Strada Construction 520-628-0460

Discussion items are as follows:

1. City is to contact APS and request design plans and requirements for electrical installation from the pole to the new service.
2. Per design engineer only new equipment is to be 22K AIC rated and listed. This requirement does not apply to existing equipment that is not in scope.
3. Design engineer is issuing a plan change to relocate all new equipment to the north facing wall, installed on wall or a unistrut frame with legs embedded in concrete (mounting is contractor's choice). See attached redlines for clarification.
4. Bidders are to provide detailed estimates broken down to represent each component of the project as shown on the design plans. The generator shall be a separate line item (as an alternate) and cost estimate for a diesel and natural gas generator shall be provided. This equipment will be an owner option.
5. City to perform all trenching. Scheduling for this work shall be done by the contractor through the work order process with Tombstone Public Works Department.



INTERIOR PANEL					EXTERIOR PANEL															
CIR	DESCRPT	P	BKR	PHASE	PHASE	BKR	P	PHASE	PHASE	BKR	P	PHASE	PHASE	BKR	P	PHASE	PHASE	BKR	P	
1	fans main rm	1	20	1600	0	0	space	2	1	lites main rm	1	20	1800	1600	20	1	steam table lites	2		
3	recept dine s wall	1	20	1600	1600	20	1	recept dine n wall	4	3	lites main rm	1	20	1800	1600	20	1	kit refer	4	
5	lites	1	20	1000	800	20	1	gfi toilet rms	6	5	emergency lites	1	20	1200	1800	20	1	kit microwave	6	
7	lites	1	20	800	800	20	1	kit recept	8	7	kitchen sub pnl	2	100	9600	9600	20	1	steam table	8	
9	rec lites main rm	1	20	1600	1600	20	1	hood fans	10	9	kitchen sub pnl	2	100	9600	3480	40	2	new coffee maker	10	
11	space	0	0	0	1200	20	1	kit e wall	12	11	office recept	1	20	0	1000	3480	40	2	new coffee maker	12
13	space	0	0	0	0	20	1	kit	14	13	new router rec	1	20	1200	0	0	0	space	14	
15	space	0	0	0	0	0	0	space	16	15	new computer rec	1	20	0	1200	0	0	space	16	
17	outside lites	1	20	1200	1200	20	1	outside lites	18	17	space	0	0	0	0	0	0	space	18	
19	ac #1	2	60	5600	1500	20	1	kit ne recept	20	19	space	0	0	0	0	0	0	space	20	
21	ac #1	2	60	5600	2880	30	2	3.5 t hp # 3	22	21	space	0	0	0	0	0	0	space	22	
23	3.5 t hp # 2	2	30	2880	2880	30	2	3.5 t hp # 3	24	23	space	0	0	0	0	0	0	space	24	
25	3.5 t hp # 2	2	30	2880	0	20	1	furnace #3	26	25	space	0	0	0	0	0	0	space	26	
27	furnace #1	1	20	1656	0	20	1	lites	28	27	space	0	0	0	0	0	0	space	28	
29	furnace #2	1	20	1656	0	0	0	space	30	29	space	0	0	0	0	0	0	space	30	
31	space	0	0	0	1200	20	1	recept	32	31	space	0	0	0	0	0	0	space	32	
33	space	0	0	0	0	0	0	space	34	33	space	0	0	0	0	0	0	space	34	
35	space	0	0	0	0	0	0	space	36	35	space	0	0	0	0	0	0	space	36	
37	space	0	0	0	0	0	0	space	38	37	space	0	0	0	0	0	0	space	38	
39	space	0	0	0	0	0	0	space	40	39	space	0	0	0	0	0	0	space	40	
41	space	0	0	0	0	0	0	space	42	41	space	0	0	0	0	0	0	space	42	
TOTAL KVA		22816		21716						TOTAL KVA		20880		20480						
TOTAL AMP		183.4667		180.9667						TOTAL AMP		167.3333		170.6667						
PNL NAME		MLO		MLO		MAIN BKR				PNL NAME		N		MLO		MAIN BKR				
VOLTAGE		120/240		200A		BUSS				VOLTAGE		120/240		200A		BUSS				
EXISTING PANEL FLUSH MOUNT, NEMA1, SERIES RATED										EXISTING PANEL FLUSH MOUNT, NEMA1, SERIES RATED										
IF PANEL CANNOT BE MADE CODE COMPLIANT REPLACE										IF PANEL CANNOT BE MADE CODE COMPLIANT REPLACE										

EXISTING PANEL W/ EXISTING BREAKERS																			
CIR	DESCRPT	P	BKR	PHASE	PHASE	BKR	P	PHASE	PHASE	BKR	P	PHASE	PHASE	BKR	P	PHASE	PHASE	BKR	P
1	fans main rm	1	20	0	0	0	space	2	xxx										
3	recept dine s wall	1	20	0	0	20	1	recept dine n wall	4										
5	lites	1	20	0	0	20	1	gfi toilet rms	6										
7	lites	1	20	0	0	20	1	kit recept	8										
9	rec lites main rm	1	20	0	0	20	1	hood fans	10										
11	space	0	0	0	0	20	1	kit e wall	12										
13	space	0	0	0	0	20	1	kit	14										
15	space	0	0	0	0	0	0	space	16	xxx									
17	outside lites	1	20	0	0	20	1	outside lites	18										
19	ac #1	2	60	0	0	20	1	kit ne recept	20										
21	ac #1	2	60	0	0	30	2	3.5 t hp # 3	22										
23	3.5 t hp # 2	2	30	0	0	30	2	3.5 t hp # 3	24										
25	3.5 t hp # 2	2	30	0	0	20	1	furnace #3	26										
27	furnace #1	1	20	0	0	20	1	lites	28										
29	furnace #2	1	20	0	0	0	0	space	30	xxx									
31	space	0	0	0	0	20	1	recept	32										
33	space	0	0	0	0	0	0	space	34										
35	space	0	0	0	0	0	0	space	36										
37	space	0	0	0	0	0	0	space	38	xxx									
39	space	0	0	0	0	0	0	space	40	xxx									
41	space	0	0	0	0	0	0	space	42										
TOTAL KVA		0		0						TOTAL KVA		0		0					
TOTAL AMP		0		0						TOTAL AMP		0		0					
PNL NAME		E		MLO		MAIN BKR				PNL NAME		E		MLO		MAIN BKR			
VOLTAGE		120/240		200A		BUSS				VOLTAGE		120/240		200A		BUSS			
EXISTING PANEL FLUSH MOUNT, NEMA1, SERIES RATED										EXISTING PANEL FLUSH MOUNT, NEMA1, SERIES RATED									

Contact Arizona 811 at least two full working days before you begin excavation

Call 811 or click Arizona811.com

JOB ADDRESS: 507 E TOUGHNUT ST ARCHITECT: WAYNE R. SCHEIBE
SIGNATURE: DATE:

CODE ANALYSIS DATA
Summary of Governing Regulations

Code	Title	Edition	Local Amendments
Building Code	IRC/IBC	2012	
Accessibility Code	ICC/ANSI A117.1	2012	
Mechanical Code	IMC	2012	
Electrical Code	NEC	2012	
Plumbing Code	UPC	2012	
Fire Prevention Code	IFC	2012	AND LOCAL AMENDMENTS
Zoning Code	-	-	
Energy Code	IECC-SES	2012	

General Building Summary

Building	Occupancy Group(s)	Type of Construction	Sprinkler System	Building Area (sq.ft.)	Building Height (ft/# of Stories)
A	A-3	VB	NO	2998 sqft	14'-4" 1
B					
C					

Mixed Occupancy

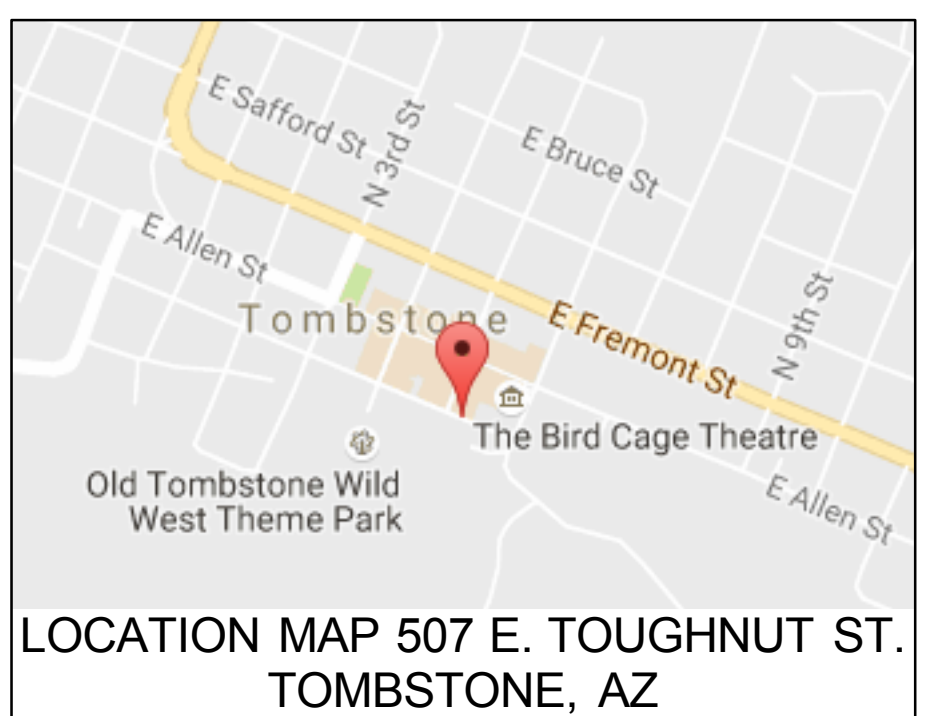
Separated Uses	Y	(N)	Nonseparated Uses	Y	(N)
Fire Area	Occ Groups	Fire Area	Occ Groups	Fire Area	Occ Groups
A		C		E	
B		D		F	
				G	
				H	

Special Uses and Occupancy

Conditions Applicable	Y	(N)	Special Use
Occupant load: 98			

ENERGY VALUES PER IRC SEC N1101 & TABLE 1102.1

ZONE 2	COHISE COUNTY
GLAZING	U-0.40
CEILINGS	R-38
WALLS	R-13
OPAQUE DOORS	U-0.35
SHGC	U-0.25
SKYLITES	U-0.65



1 FLOOR PLAN / PARTIAL SITE
Scale: 1/4" = 1'-0"

SHEET INDEX
AE-1 FLOOR / PARTIAL SITE-PANELS
E-1 ELEC SPECS
E-2 PLAN
E-3 RISER / DETAILS

No.	Date	Revision Notes	Zone	Approvals	No.	Date	Issue Notes
A	11/15/16	REVIEW COMMENT CHANGES					

Design Firm
Wayne Scheibe Architect
PO BOX 445
DRAGOON, AZ
(520) 906-7548

Project Title
TOMBSTONE SENIOR CENTER
507 E TOUGHNUT ST
TOMBSTONE, AZ

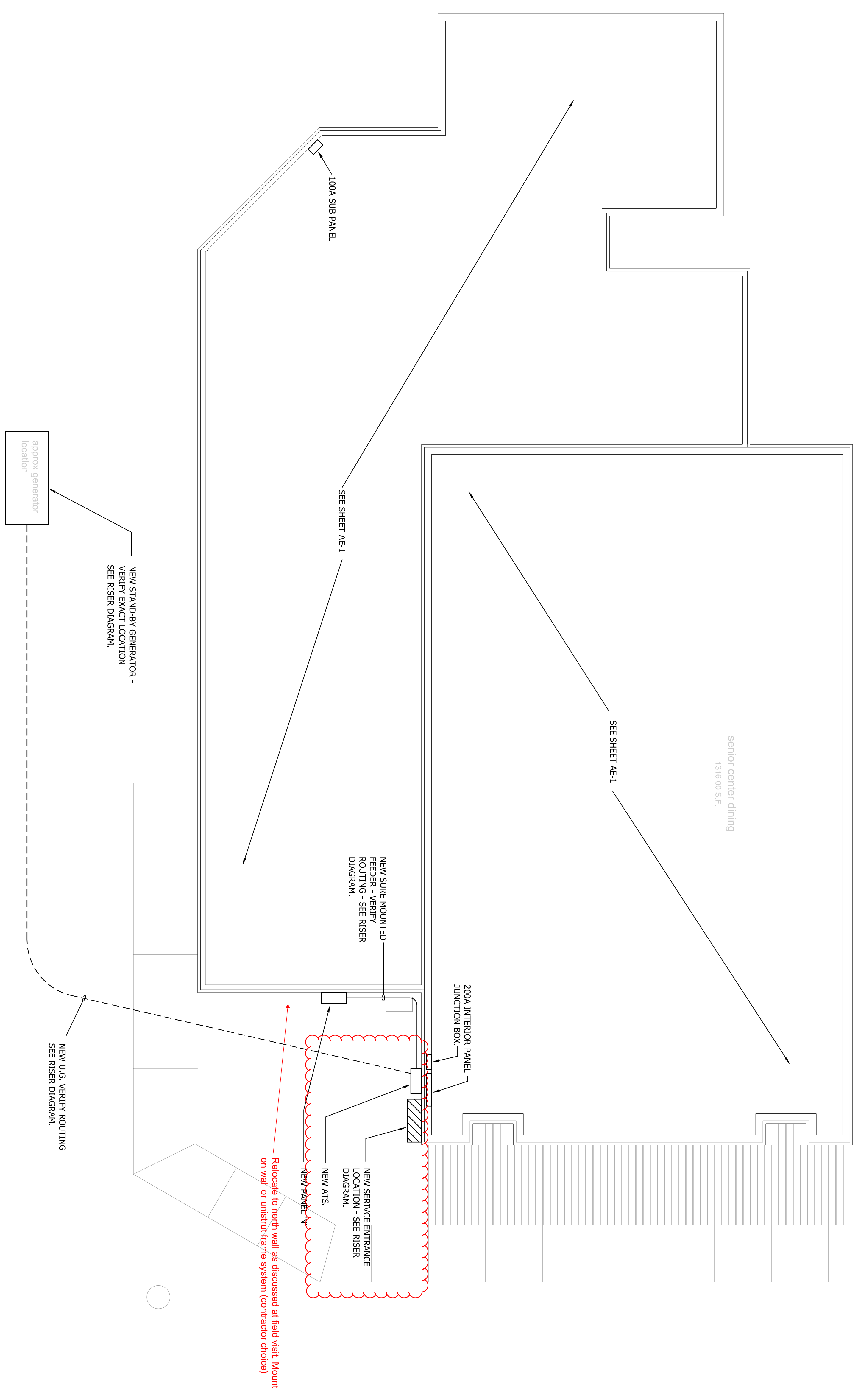
Project Manager
Scale
1/4" = 1'0"

Consultant

Drawing Title
Floor Plan / Electric Panels

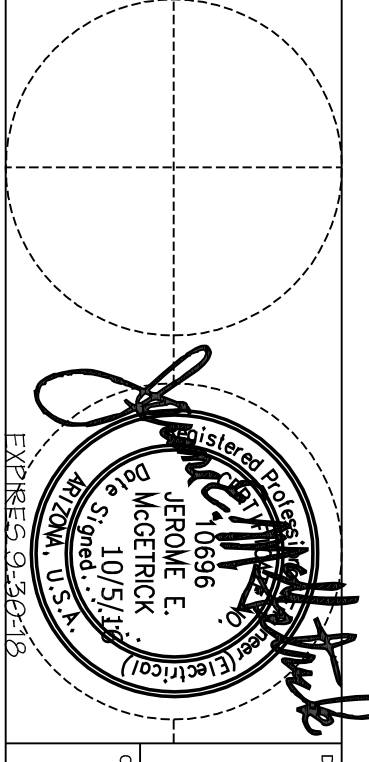
Project ID

Date
Drawing No.
AE-1
of
4



1 ELECTRICAL PLAN
 Scale: 1/4" = 1'-0"

No.	Date	Revision Notes	Zone	Approve	No.	Date	Issue Notes



Wayne Scheibe Architect
 PO BOX 445
 DRAGOON, AZ
 (520) 906-7548

Engineered Design Group - West
 354 N. AVENUE HWY
 TUCSON, AZ 85711

Project Title: Tombstone Senior Center
 Drawing Title: Electrical Plan

Drawn By: [Blank]
 Checked By: [Blank]
 Date: [Blank]

Scale: AS NOTED
 Sheet: E-2 of 3

ENGINEERED DESIGN GROUP
 CONSULTING MECHANICAL-ELECTRICAL-PLUMBING
 AIR CONDITIONING AND PROTECTION ENGINEERS

561 N. ALBERSON AVE. TUCSON, AZ 85711
 (520) 798-8441
 WWW.EDG-CON.COM

WEBSITE: WWW.EDG-CON.COM
 CERTIFICATE OF AUTHORIZATION #000000000000

THIS DRAWING IS PRELIMINARY. NOT FOR CONSTRUCTION UNLESS SHOWN OTHERWISE. © 2016 EDG. ALL RIGHTS RESERVED. PERMISSION TO REPRODUCE THIS DRAWING WITHOUT PERMISSION OF EDG WEST, INC. IS PROHIBITED UNLESS SHOWN OTHERWISE.