

HISTORIC PRESERVATION COMMISSION
APPLICATION CHECK LIST

Item # 1 Type of Application: Check all that apply.

Item # 2 Applicant/Property information to include: Owner name,
Address and phone number.

Item #3 National Historic Register (NHR) Contributor
Yes _____ No _____
This is for building or sites that are on the NHR.

Item # 4 Description of proposed work. (Use second page if necessary)

Item # 5. Material that need to be submitted with application:

Approved paint samples are available to view at City Hall.

Approved lettering fonts are provided in the Application
packet.

Photos of the site and the surrounding area. If in doubt on
what to supply, contact the city building inspector.

Property owner or authorized individual's signature.

*** The Historic Preservation Commission meets every 4th Tuesday
of each month at Schieffelin Hall.

** Application and all material for said application must be submitted
five (5) working days prior to regular Historic Preservation
Commission Meeting to be placed on the agenda for review**

*HPC approval does not include approval for a building permit. A separate
building permit must be obtained if required by the City or the 2006 International
Building Code. Please contact City Hall for building permit information.

HISTORIC PRESERVATION COMMISSION
REVIEW APPLICATION

Case No. _____

1. Type of Application (Check all that apply)

_____ Rehabilitation
_____ New Construction
_____ Demolition
_____ Sign
_____ Other

2. Applicant/Property Information (Owner Name /Address)

Phone No.: _____ Parcel No. _____

Property Location: _____

Contact Person (If different from Owner) _____

Contact Phone No. _____

3. National Historic Register Contributor? Yes _____ **No** _____

4. Description of Work: _____

5. Materials Submitted with Application:

_____ Plans _____ Color/Texture Sample _____ Other Samples

_____ Photos _____ Lettering Samples _____ Other (Special)

_____ **Date:** _____

Property Owner or Authorized Person Signature

**HISTORIC PRESERVATION COMMISSION
STAFF REPORT**

Case Number: _____

_____ Application / Attachments Complete
Referred to HPC _____
Date

_____ Application / Attachments Incomplete
Returned to Applicant _____
Date

HISTORIC PRESERVATION COMMISSION ACTION

_____ Meeting Date

_____ Approved as Submitted

_____ Approved with Conditions or Requirements

_____ Denied

Remarks: _____

HPC Chairman/Chairman Pro-Tem

Date

HISTORIC PRESERVATION INSPECTOR REVIEW SHEET

Case Number : _____

Type of Application: _____

Applicant: _____

Business/ Address: _____

Font Style: _____ Colors _____ Construction _____

NOTES _____

Linear Footage of Building: _____

Signage Total _____

Recommended Approval _____

Not Recommended Approved _____

Additional Notes: _____

Historic Preservation Inspector

Date

34
22
21

23
22
21
20
19
18
17
16
15
14
13

23
22
21
20
19
18
17
16
15
14
13

23
22
21
20
19
18
17
16
15
14
13

30
15
14
13

FRANKMONT ST

16
1
2
3
4
5
6
7
8
9
10
24
23
22
21
20
19
18
17
16
15
14
13

17
1
2
3
4
5
6
7
8
9
10
24
23
22
21
20
19
18
17
16
15
14
13

18
1
2
3
4
5
6
7
8
9
10
24
23
22
21
20
19
18
17
16
15
14
13

19
1
2
3
4
5
6
7
8
9
10
24
23
22
21
20
19
18
17
16
15
14
13

12
24

THOMASTOWN SCHOOLS

ALLIN ST

11
12
13
14
15
16
17
18
19
20
21
22
23
24

11
12
13
14
15
16
17
18
19
20
21
22
23
24

11
12
13
14
15
16
17
18
19
20
21
22
23
24

11
12
13
14
15
16
17
18
19
20
21
22
23
24

19
20
21
22
23
24
1
2
3
4

TOUGHMONT ST

1
2
3
4
5
6
7
8
9
10
11
12
13
14
15
16
17
18
19
20
21
22
23
24

1
2
3
4
5
6
7
8
9
10
11
12
13
14
15
16
17
18
19
20
21
22
23
24

1
2
3
4
5
6
7
8
9
10
11
12
13
14
15
16
17
18
19
20
21
22
23
24

1
2
3
4
5
6
7
8
9
10
11
12
13
14
15
16
17
18
19
20
21
22
23
24

DISTRICT BOUNDARY

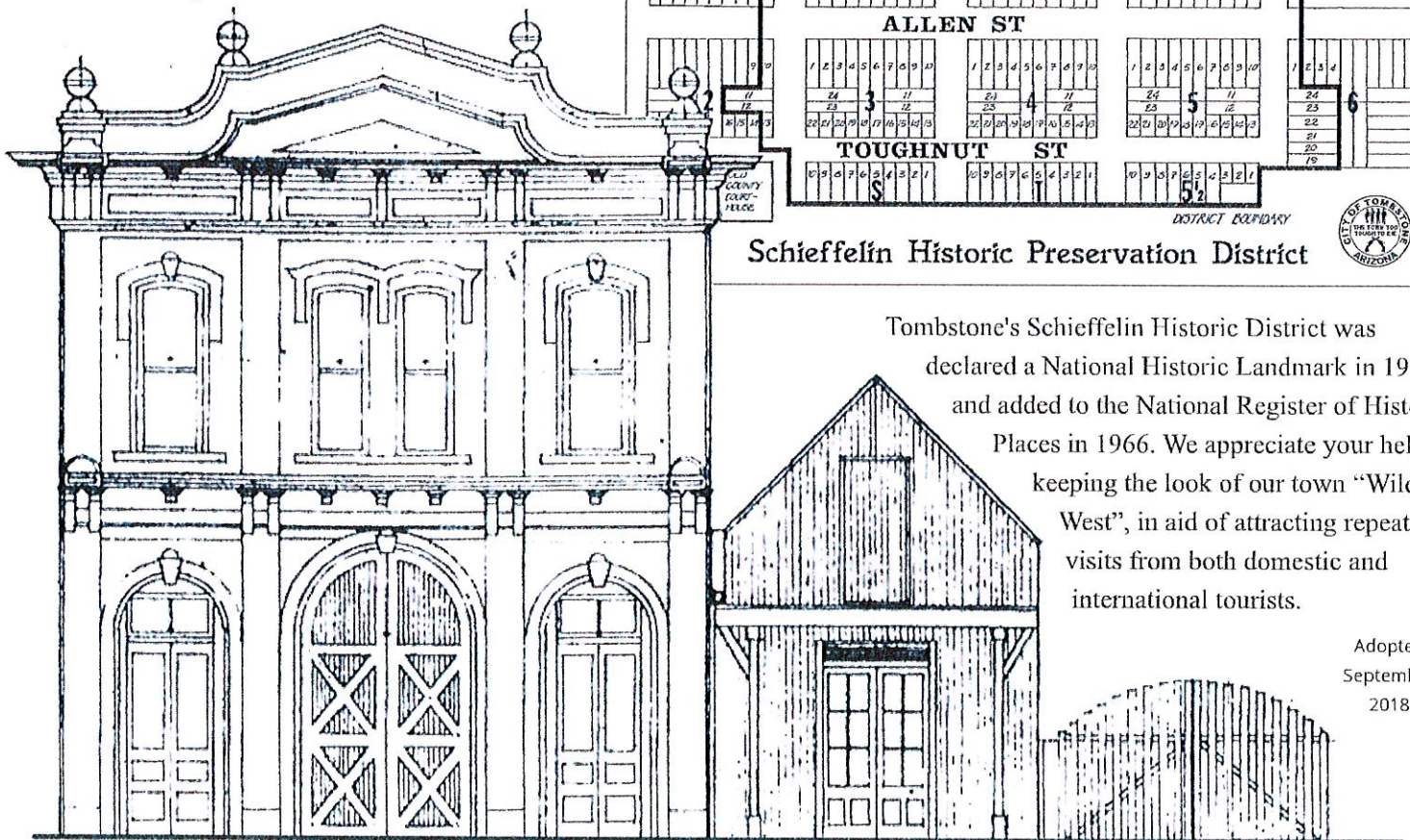
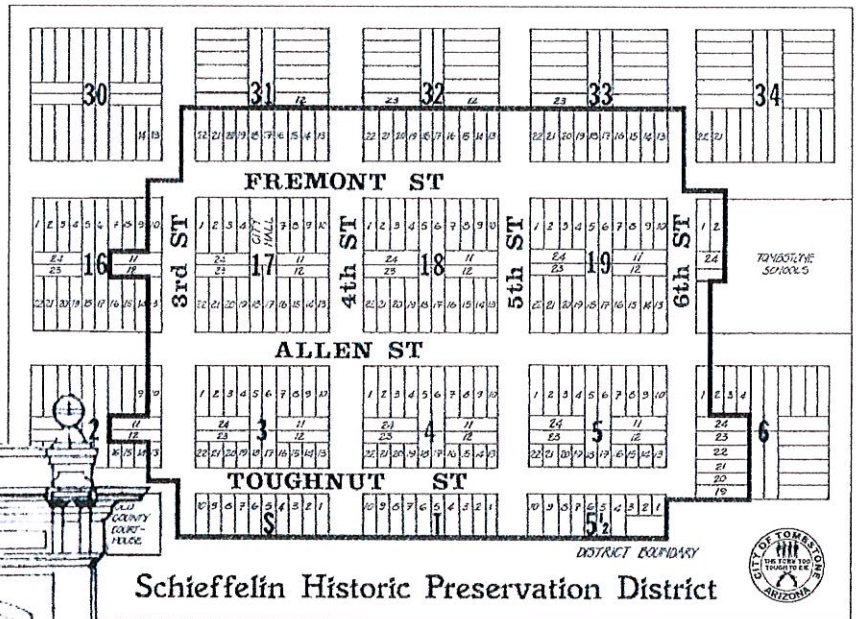
SCHULTZ



Schieffelin Historic Preservation District Design Guidelines Packet

SIGNAGE, FONTS, AND COLORS

Sign designs and colors, as well as building exterior colors, must be approved before use in Tombstone's Schieffelin Historic District. This Design Guidelines Packet covers sign dimensions and regulations. A list of pre-approved signage fonts is included, as well as examples of pre-approved colors for signage and for building exteriors. If questions, please contact the HPC Inspector via Tombstone City Hall.



Tombstone's Schieffelin Historic District was declared a National Historic Landmark in 1961, and added to the National Register of Historic Places in 1966. We appreciate your help keeping the look of our town "Wild West", in aid of attracting repeat visits from both domestic and international tourists.

Adopted
September
2018

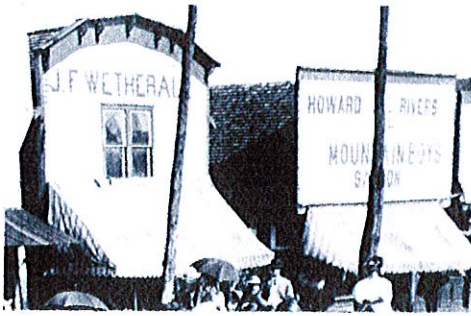
Historic Preservation Commission





SIGNS AND FONTS

Choosing fonts for a store's signage



This Design Guidelines Packet includes examples of fonts pre-approved by the Historical Preservation Commission. There are a good selection of the different font types: sans-serif, serif, slab-serif, and decorative. Any of these can be used alone or in combination for the building's exterior signage. All the pre-approved fonts are available from the Corel Draw program in .TTF digital format, ready for a signmaker to put to use.

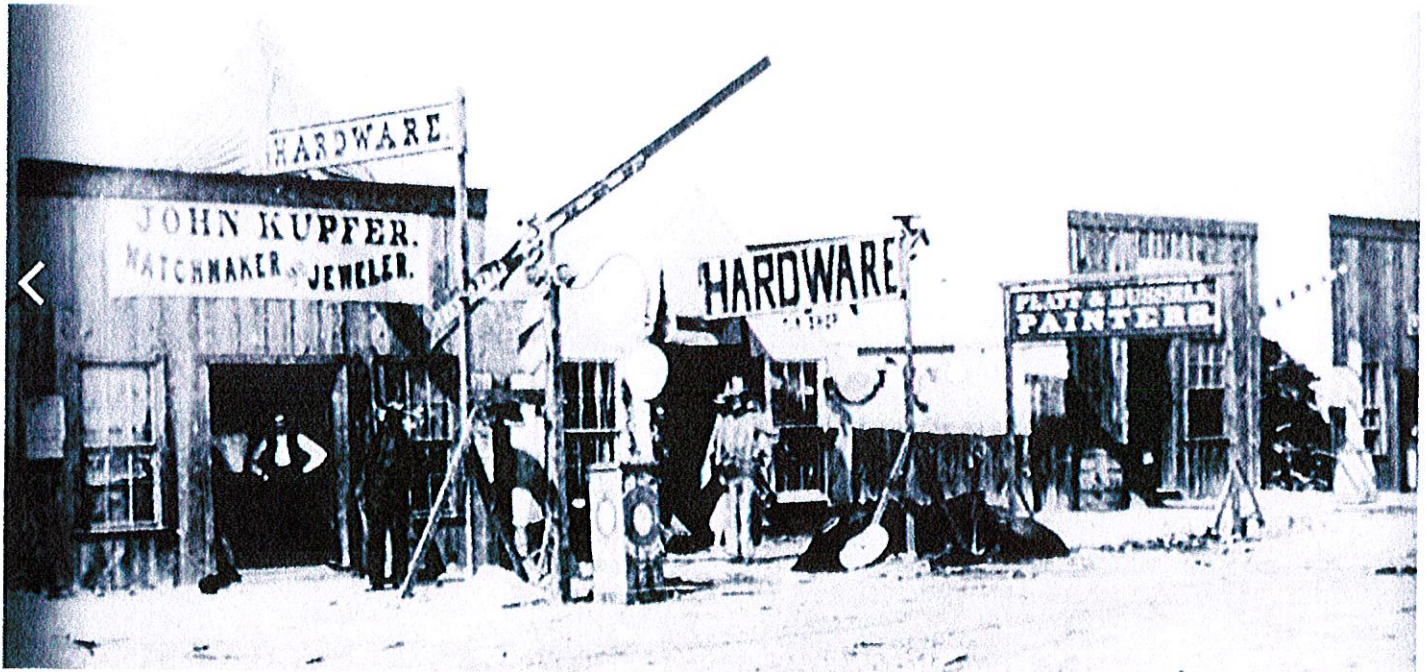


Choosing fonts can be interesting. The Algerian font that comes with Microsoft office is actually a precise copy of the 1911 font Glyphic... which is very different than a modern font also called Glyphic. But Algerian, which most people might think is too new to use, is actually the real thing.



Firemen in Tombstone, 1885

ALGERIAN



A street scene, back then. Signs everywhere! Sadly, the HPC Code today does not allow for giant rifles projecting out over the street. But a sign can extend 24" from the building, which would allow for a huge Buntline Special graphic. Painted images in the historic 1878-1912 period were often (but not always) simple one-color silhouettes.

Special thanks to Lilly Hritz and Derek Carewe for the use of these photos.



SIGN DIMENSIONS

How large can signs be?

In the Historic Preservation District, there are four types of signs to look at:

1. Signs hanging above the boardwalk
2. Signs attached to front eaves facing the street
3. Signs painted on or affixed to the building facade -- the parapet -- above the eaves.
4. Signs painted or affixed to windows, inside or outside.

For types 1 and 2, there must be 8' of clearance between sign and boardwalk.

For type 1 -- Maximum area of any sign hanging over the boardwalk shall be 8 sq ft, with 2 ft maximum height, and 8 ft maximum length (like 2' x 4' or 1' x 8').

For type 1 -- No more than three hanging signs per business.

For type 2 -- One attached sign facing the street. If building is on a corner, it can have two attached signs. Maximum area per attached sign: 8 sq ft -- 2 ft max high, 8 ft max long.

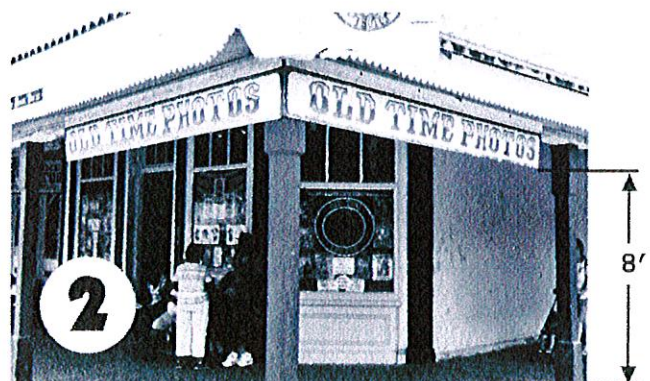
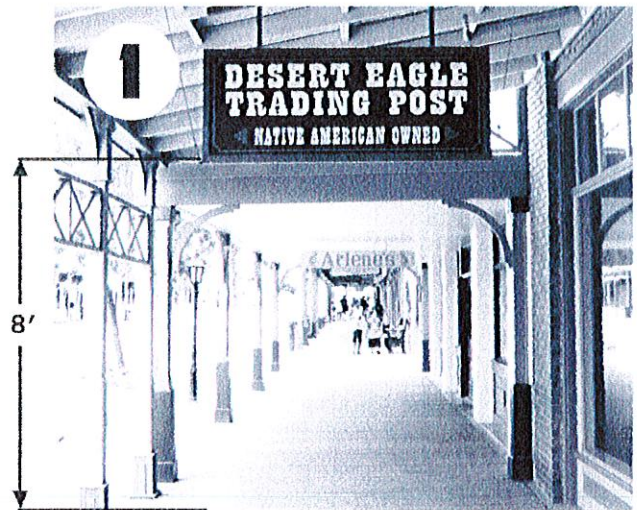
Sign and clearance dimensions are per City Code 10-14-8.

Type 3 -- Painted or attached signs above the eaves, on the building upper facade -- no size limit. But there must be at least 2 feet of empty space at each end of the upper facade sign.

Type 4 -- (not shown) Windows signs can be on any glass pane, but each sign is limited to 50% of the area of its pane.

Signs or displays may be lit by indirect electric lighting, with the light source hidden from public view. Not allowed: neon, LEDs, or other non-historic lighting.

A bonded, licensed signmaker must install the signs.
see City Code 10-14-16-2 and -3.





PRE-APPROVED FONTS

Each of the fonts below is approved by the Historic Preservation Commission for use in the Schieffelin Historic District. These fonts can be found in the popular Corel Draw illustration program. Or, you can access a font by searching for its TrueType TTF filename in a browser-- like 'aurorabc.ttf'.

Sans-Serif

Serif

Slab-Serif

Decorative

Font ID No. for
Application form

TOMBSTONE

01 Aurora Bold Cond Aurorabc.ttf

TOMBSTONE

02 Bell Gothic Black Bellgothk.ttf

TOMBSTONE

03 Franklin Gothic Demi Frkgotd.ttf

TOMBSTONE

04 Franklin Gothic Heavy Frkgoth.ttf

TOMBSTONE

05 Gothic725 Black Goth725k.ttf

TOMBSTONE

06 Gothic 821 Condensed Goth821c.ttf

TOMBSTONE

07 Gothic No 13 Gothic13.ttf

TOMBSTONE

08 GoudySans Md Goudsanb.ttf

TOMBSTONE

09 Humanist521 XBdCn Hu521xbc.ttf

TOMBSTONE

10 Humanist521 BT Hum521b.ttf

TOMBSTONE

11 Incised901 BdCn Inc901bc.ttf

TOMBSTONE

12 Incised901 Ct Bt Inc901c.ttf

TOMBSTONE

13 Incised901 Bt Inc901k.ttf

TOMBSTONE

14 NewsGoth Bt Newsgotb.ttf

TOMBSTONE

15 Square721 Bt Sqr721b.ttf

TOMBSTONE

16 Square721 Cn Bt Sqr721bc.ttf



PRE-APPROVED FONTS

Each of the fonts below is approved by the Historic Preservation Commission for use in the Schieffelin Historic District. These fonts can be found in the popular Corel Draw illustration program. Or, you can access a font by searching for its TrueType TTF filename in a browser-- like 'aurorabc.ttf'.

Font ID No. for
Application form

Sans-Serif

Serif

Slab-Serif

Decorative

TOMBSTONE

17 AveriaSerif-Regular.ttf

TOMBSTONE

18 Callisto Callist.ttf

TOMBSTONE

19 Cambria Cambria.ttc

TOMBSTONE

20 Century Schoolbook Censbkn.ttf

TOMBSTONE

21 Detente Detente.ttf

TOMBSTONE

22 Elephant Elephnt.ttf

TOMBSTONE

23 Engravers Expanded Engr.ttf

TOMBSTONE

24 Footlight Light FTLTLT.ttf

TOMBSTONE

25 Garamond Bold Garamdb.ttf

TOMBSTONE

26 Georgia Bold georgiab.ttf

TOMBSTONE

27 Gloucester Xtra Cond regv2c.ttf

TOMBSTONE

28 Goudy Stout Glecb.ttf

TOMBSTONE

29 Niagara Solid Niagsol.ttf

TOMBSTONE

30 Notram Notram_.ttf

TOMBSTONE

31 Palatino Bold palab.ttf

TOMBSTONE

32 Times Heavy Timeshe.ttf

TOMBSTONE

33 Volkorn Bold Vollkorn-Bold.ttf

TOMBSTONE

34 Waverly Waverly_.ttf



PRE-APPROVED FONTS

Each of the fonts below is approved by the Historic Preservation Commission for use in the Schieffelin Historic District. These fonts can be found in the popular Corel Draw illustration program. Or, you can access a font by searching for its TrueType TTF filename in a browser-- like 'aurorabc.ttf'.

Font ID No. for
Application form

Sans-Serif

Serif

Slab-Serif

Decorative

TOMBSTONE

35 Clarendon Clrndnb.ttf

TOMBSTONE

36 Coltfnt.ttf

TOMBSTONE

37 Cottage.ttf

TOMBSTONE

38 Durango Western Eroded.ttf

TOMBSTONE

39 Egypt710.ttf

TOMBSTONE

40 GeoSlab 703.XBdCn Ge703xbc.ttf

TOMBSTONE

41 GeoSlab 703.XBdCn Geo712xb.ttf

TOMBSTONE

42 Playbill playbiln.ttf

TOMBSTONE

43 PT Barnum ptbarnmn.ttf

TOMBSTONE

44 RaleighXb.ttf

TOMBSTONE

45 Regulators Cond regv2c.ttf

TOMBSTONE

46 Regulators Shadow regv2c.ttf

TOMBSTONE

47 Schadow schadwb.ttf

TOMBSTONE

48 Schadow Blk schadwk.ttf

TOMBSTONE

49 Serifa Blk serifak.ttf

TOMBSTONE

50 SquareSlab 711 Bold sqrs711b.ttf

TOMBSTONE

51 Stymie Xbd stymiexb.ttf

TOMBSTONE

52 Stymie XBdCn stymixbc.ttf



PRE-APPROVED FONTS

Each of the fonts below is approved by the Historic Preservation Commission for use in the Schieffelin Historic District. These fonts can be found in the popular Corel Draw illustration program. Or, you can access a font by searching for its TrueType TTF filename in a browser-- like 'aurorabc.ttf'.

Font ID No. for
Application form

Sans-Serif

Serif

Slab-Serif

Decorative



TOMBSTONE

53 Algerian.ttf

TOMBSTONE

54 BannerStar.otf

TOMBSTONE

55 Bosox Semibold.ttf

TOMBSTONE

56 BraceletVictorian.ttf

TOMBSTONE

57 Coney Island conei____.ttf

Tombstone

58 Blackadder.ttf

TOMBSTONE

59 Copperplate Bold copgothb.ttf

TOMBSTONE

60 Copperplate Heavy copgothh.ttf

TOMBSTONE

61 Davida davidab.ttf

TOMBSTONE

62 Decorated035 Deco035n.ttf

TOMBSTONE

63 Goudy Handtooled Goudhndn.ttf

TOMBSTONE

64 Gradientico.ttf

TOMBSTONE

65 JoeClement.ttf

TOMBSTONE

66 Legal Tender Cond legalV2c.ttf

TOMBSTONE

67 Nandaka_western.ttf

Tombstone

68 Salina____.ttf

TOMBSTONE

69 San Antonio Charros.ttf

Tombstone

70 Edwardian Script itcedscr.ttf

TOMBSTONE

71 Toussant-Regular.ttf

TOMBSTONE

72 usmarshalcond.ttf

Tombstone

73 CloisterBlack.ttf

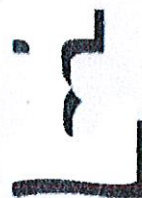


FONT EMBELLISHMENTS

Simple ways to make signs special



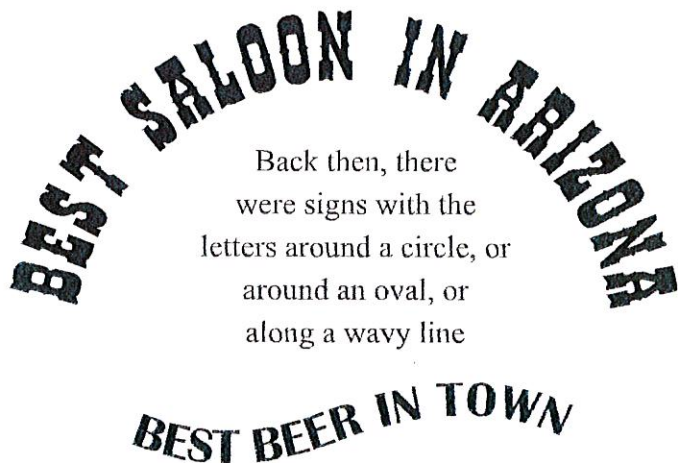
Many signs back then had added effects to make the lettering stand out. Here are six examples.



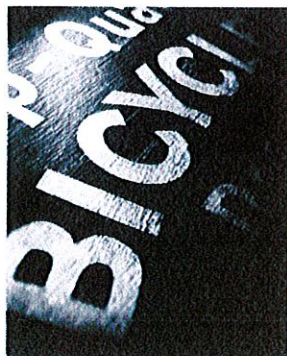
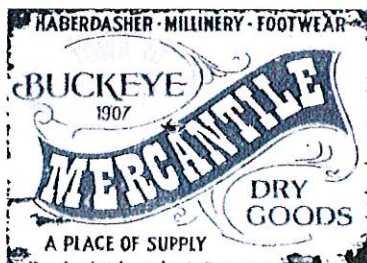
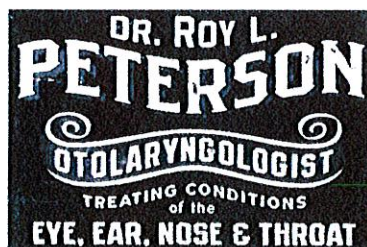
The signmaker may also show other ways to enhance the letters -- just keep them historic! To be clear, here's an example of a popular embellished font that is NOT historic -- it's called

Bleeding Cowboys

Looks Old West, but isn't at all. Places that have signs with fonts like this often end up as Disneyland caricatures of 1880s towns. Tombstone maintains the Real West, the true west, as closely as possible.



Back then, there were signs with the letters around a circle, or around an oval, or along a wavy line



Endless variations -- just keep it Old West!



Historic Preservation Commission

PRE-APPROVED EXTERIOR COLORS

These are the colors shown in the Sherwin-Williams
'Exterior Historic Colors - America's Heritage' swatch book.
They may also be used on exterior signs.

	SW2804 Renwick Rose Beige		SW2829 Classical White
	SW2824 Renwick Golden Oak		SW0050 Classic Light Buff
	SW2822 Downing Sand		SW2814 Rookwood Antique Gold
	SW2805 Renwick Beige		SW0024 Curio Gray
	SW2813 Downing Straw		SW2827 Colonial Revival Stone
	SW0045 Antiquarian Brown		SW2856 Fairfax Brown
	SW0023 Pewter Tankard		SW2819 Downing Slate
	SW2833 Roycroft Vellum		SW0001 Mulberry Silk
	SW2833 Roycroft Vellum		SW2820 Downing Earth
	SW2838 Polished Mahogany		SW2815 Renwick Olive
	SW0005 Deepest Mauve		SW2803 Rookwood Terra Cotta
	SW2811 Rookwood Blue Green		SW2816 Rookwood Dark Green
	SW0014 Sheraton Sage		SW2807 Rookwood Medium Brown
	SW0009 Eastlake Gold		SW2802 Rookwood Red
	SW0052 Pearl Gray		SW2817 Rookwood Amber

This printed page (or onscreen display) is not intended for accurate color matching. Use a printed color swatch book, or actual paint chip samples. For matches with paint from other companies, see https://www.mypertcolor.com/en/color/66585_Sherwin-Williams-SW2833-Roycroft-Vellum ... then click 'Navigate Colors' and scroll down the page.



**SHERWIN
WILLIAMS**



PRE-APPROVED EXTERIOR COLORS

These are the colors shown in the Sherwin-Williams
'Exterior Historic Colors - America's Heritage' swatch book.
They may also be used on exterior signs.

	SW2835 Craftsman Brown		SW0018 Teal Stencil
	SW2834 Birdseye Maple		SW0077 Classic French Gray
	SW2848 Roycroft Pewter		SW6119 Antique White
	SW2843 Roycroft Brass		SW6119 Antique White
	SW2841 Weathered Shingle		SW2844 Roycroft Mist Gray
	SW2806 Rookwood Brown		SW2842 Roycroft Suede
	SW2846 Roycroft Bronze Green		SW7012 Creamy
	SW6244 Naval		SW7006 Extra White
	SW2837 Aurora Brown		SW0048 Bunglehouse Blue
	SW2839 Roycroft Copper Red		SW2847 Roycroft Bottle Green
	SW2821 Downing Stone		SW2801 Rookwood Dark Red
	SW2823 Rookwood Clay		SW0032 Needlepoint Navy
	SW2851 Sage Green Light		SW0032 Needlepoint Navy
	SW2826 Colonial Revival Green Stone		SW2853 New Colonial Yellow
	SW0050 Classic Light Buff		SW0006 Toile Red





Historic Preservation Commission

PRE-APPROVED SIGN COLORS

These colors were chosen by the National Trust for Historic Preservation, partnering with Valspar Paint Co. Shown here where possible with their Pantone color equivalents (signmakers work with the Pantone color system). Colors with an * asterisk are pre-approved in addition to the National Trust for Historic Preservation colors.

Blues

	Valspar™ 5001-3B Woodlawn Sterling Blue Sherwin Williams™ SW2256 (no Pantone)
	Valspar™ 4007-5C Cincinnati Hotel Ashley Pantone™15-4005
	Valspar™ 5003-9C Lyndhurst Celestial Blue Pantone™13-4720
	Valspar™ 5003-10B Filoli Morning Glory Pantone™P 118-8
	Valspar™ 5003-10C Filoli Garden Pool Pantone™P 119-15
	Valspar™ 4008-4A Jekyll Club Pulitzer Blue Pantone™17-4111
	Valspar™ 5010-10 Hotel St. Francis Spirit Blue Pantone™18-4225
	Valspar™ 4011-7 La Fonda Deep Blue Pantone™PMS 7700
	Valspar 4004-4C La Fonda Midnight Pantone™P 111-16
	Valspar 6009-5 Fairmont Penthouse Mosaic Blue Pantone™PMS 548
	* Valspar™4004-7B Surrender Pantone™ PMS 657
	Valspar™ 4003-6B Redstone Guest Blue Pantone™PMS 2159
	* Behr™2A38-5 Fantasy Blue Pantone™ PMS 7685
	* Beckers™S4055-R70B Pantone™PMS 288
	* Behr™PPKR-44 American Blue Pantone™ PMS 540

Browns

	Valspar 4009-2 Lincoln Cottage Black Pantone™19-4205
	Valspar 6011-2 Burnt Tile (also Betsy Ross Brown) Pantone™PMS 7533
	Valspar™ 3011-9 Cooper Adobe Brown Pantone™P 179-15
	Valspar™ 3010-9 Churchill Hotel Brown Pantone™P 23-15
	Valspar 2011-8 Mark Twain House Brown Pantone™PMS 7610
	Valspar™ 2011-7 Jekyll Club Cherokee Rust Pantone™ P 50-7
	Valspar 2001-7B Hubbell House Pajarito Red Pantone™P 54-13
	Valspar™ 2009-8 Redstone Mountain Brown Pantone™18-1130TPX Aztec
	Valspar™ 3001-7C Churchill Hotel Bronze Pantone™P 39-2
	Valspar™ 2006-8A Lyndhurst Estate Peach Pantone™P 47-1
	Valspar™ 6008-1C Fairmont Penthouse Stone Pantone™13-1105
	Valspar 6006-1A Woodrow Wilson Putty Ace™162-E Homeward Bound
	Valspar™ 6008-1A Woodlawn Whitewash Ace™CW-W7 Antique White
	Valspar™ 3005-5B Del Coronado Amber Sherwin Williams™SW1370 Provincial Gold
	Valspar™ 3010-4 Belle Grove Brass Pantone™PMS 7551

This printed page (or onscreen display) is not intended for accurate color matching. Use a Pantone printed color swatch book, or actual paint chip samples. For matches with paint from other companies, see [https://www.myp perfectcolor.com/en/color/88673_Valspar-1010-1-La-Fonda-Fireberry ...](https://www.myp perfectcolor.com/en/color/88673_Valspar-1010-1-La-Fonda-Fireberry...) then click 'Navigate Colors' and scroll down the page.



National Trust for
Historic Preservation



PRE-APPROVED SIGN COLORS

These colors were chosen by the National Trust for Historic Preservation, partnering with Valspar Paint Co. Shown here where possible with their Pantone color equivalents (signmakers work with the Pantone color system).

Colors with an * asterisk are pre-approved in addition to the National Trust for Historic Preservation colors.

Reds



Valspar™ 1009-5 Fairmont Penthouse Garnet
Pantone™19-1338



Valspar™ 1010-4 La Fonda Geranium Red
Pantone™PMS 491



Valspar™ 1010-6 Hotel St. Francis Sangre De Christo
Pantone™P 64-16



Valspar™ 1008-3A Oatlands Upholstery Red
Pantone™P 60-16 U6



Valspar™ 1006-3B Homestead Resort Parlour Raspberry
Pantone™P 70-56



Valspar™ 1010-1 La Fonda Fireberry
Pantone™PMS 711



Valspar™ 2005-3B La Fonda Spanish Dancer
Pantone™P 30-7



Valspar™ 2001-6A Del Coronado Coastal Peach
Pantone™16-1434



* Valspar™ 2001-6C Tulip Pink
Behr™P170-1 Youth Blush

Purples



Valspar™ 4001-8B Oatlands Velvet Night
Pantone™18-3718



Valspar 4001-6C Oatlands Violet
Pantone™P 103-7



* Valspar™ 1002-5A Stormy Purple
Pantone™P 98-7



* Walmart™91491 Midnight Iris
Pantone™ PMS 7669



* Behr™MQ5-48 Boudoir Blue
Pantone™ PMS 7672

Yellows



Valspar™ 3011-3 Mark Twain House Yellow
Pantone™PMS 2009



Valspar™ 2008-1C Grand Hotel Awning Yellow
Pantone™PMS 1355



* Valspar™ CI233 Gone Bananas
Ace™A23-5 Downy Chick



* Valspar™3007-1C Golden Mist
Pantone™ PMS 106k



Valspar™ 3007-4A Oatlands Daisy
Sherwin Williams™ SW1666 Venetian Yellow



* Valspar™ 200A-2 Sunbathed
Pantone™P 4-1

Greens



Valspar™ 6004-5B Homestead Resort Spa Green
Pantone™12-0315



Valspar™ 5002-4B La Fonda Villa Fountain
Pantone™PMS 8281



Valspar™ 5007-8B La Fonda Teal
Pantone™17-5122



Valspar™ 5004-10C Monterey Bay Teal
Sherwin Williams™SW6951 Cote D'Azur



Valspar 5009-7 La Fonda Artisan Green
Pantone™19-4922



Valspar™ 6001-6C Cliveden Pasture
Pantone™P 159-7



Valspar™ 6001-8C Chesterwood French Green
Pantone™P 141-6



Valspar 6009-5 La Fonda Trail Green
Pantone™PMS 7736

